

FAC-SIMILE OF THE CHAUVET GROTTO

The biggest fac simile ever imagined

Owner : Ardèche General Council
Rhône-Alpes Region
Heritage Department

Place : Ardèche - France

Surface : 3 500 m²

Building costs : 15 M€

Date Opening : 2014

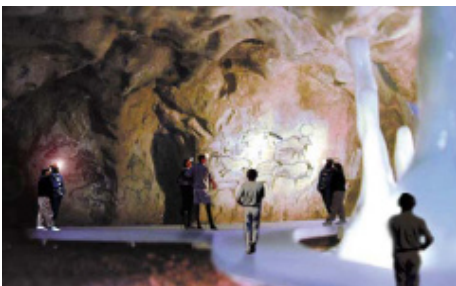
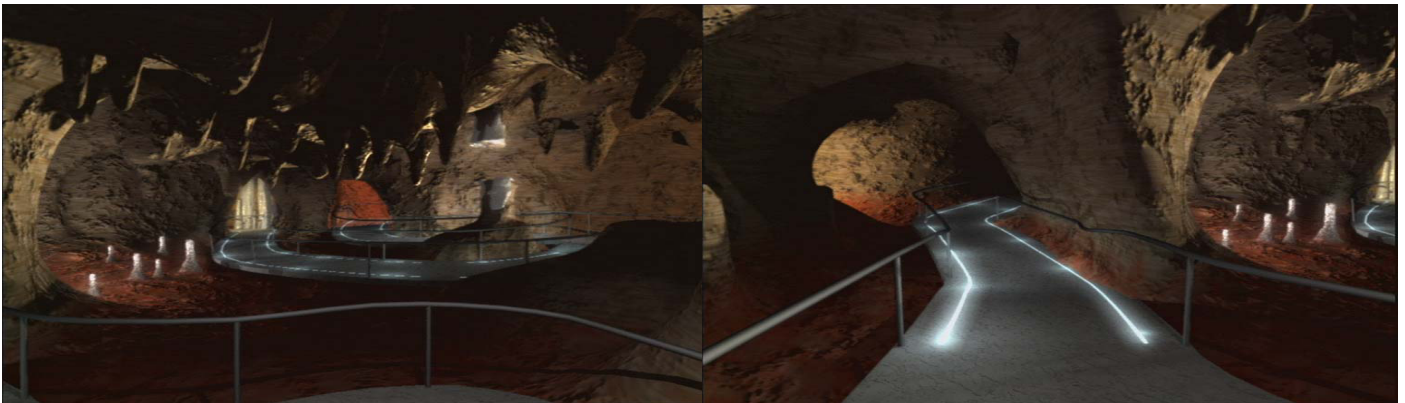
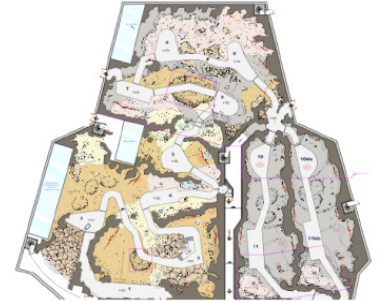
Project manager : Frédéric RAVATIN (CREATIME)

Missions :

- **Fac-simile concept**
- **Technical definition**
- **Master plan**
- **Method and process for studies and implementation**
- **Management and implementation**

Team : Animation and attraction items studies, prototypes : Jacques BOCQUET (DECALOG)
Public exploitation and management advisor : Gilbert MANTOVANI
Modélisation and numerical development : Guy PERAZIO
Movie mission : Luc JACQUET

Great Sites
and Memory Sites



CREATIME - Frédéric RAVATIN
4 rue Géo Chavez - 75020 PARIS
01 44 87 00 44 - 01 44 87 00 77
Email : creatim@wanadoo.fr
Site : www.creatime.eu